

Sarah Smith Elementary

GO Team Meeting

April 27, 2023



Agenda

- I. Call to Order**
- II. Roll Call; Establish Quorum**
- III. Action Items**
 - a. Approval of Agenda
 - b. Approval of Previous Minutes:
- IV. Discussion Items**
 - a. 2023 Spring MAPS results
 - b. BASC-3 results
 - c. Needs Assessment
- V. Information Items**
 - a. Principal's Report
 - a. 2022-2023 Family Engagement and/or Partnership Highlights
 - b. Cluster Advisory Team Report
 - c. GO Team Elections
- VI. Announcements**
- VII. Public Comment** *(if applicable)*
- VIII. Adjournment**

2023 Spring MAPS Results

Data Points to Consider

- Spring Results
- Fall to Spring Comparison
 - Literacy
 - Numeracy



MAP Growth Achievement Level Predictions by Grade

Tested Grade	Exam	Exams				
02	Math	142	23%	44%	23%	10%
	Reading	143	29%	25%	33%	13%
03	Math	140	23%	34%	34%	9%
	Reading	146	23%	27%	31%	20%
04	Math	123	17%	48%	28%	7%
	Reading	125	18%	26%	31%	24%
05	Math	129	20%	40%	25%	15%
	Reading	130	11%	28%	36%	25%



MAP Quintiles for Achievement - Math

School	Window	Exams					
DISTRICT	Spring 2022-2023	23,790	36%	19%	15%	14%	16%

School	Window	Exams					
Smith	Spring 2022-2023	814	20%	21%	19%	20%	20%

Tested Grade	Exam	Window	Exams					
KK	Math	Spring 2022-2023	129	18%	15%	16%	24%	28%
01	Math	Spring 2022-2023	151	15%	19%	17%	17%	32%
02	Math	Spring 2022-2023	142	27%	25%	20%	13%	14%
03	Math	Spring 2022-2023	140	24%	22%	15%	30%	9%
04	Math	Spring 2022-2023	123	17%	24%	27%	20%	12%
05	Math	Spring 2022-2023	129	19%	23%	19%	19%	21%

Percentile Quintile



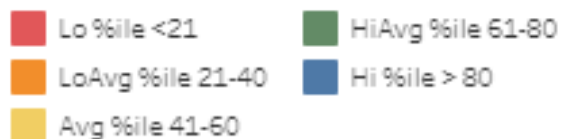
MAP Quintiles for Achievement - Reading

School	Window	Exams					
DISTRICT	Spring 2022-2023	23,930	29%	18%	17%	17%	19%

School	Window	Exams					
Smith	Spring 2022-2023	829	16%	16%	16%	23%	29%

Tested Grade	Exam	Window	Exams					
KK	Reading	Spring 2022-2023	128	17%	20%	16%	25%	22%
01	Reading	Spring 2022-2023	157	14%	13%	17%	20%	36%
02	Reading	Spring 2022-2023	143	27%	13%	15%	17%	29%
03	Reading	Spring 2022-2023	146	18%	17%	14%	25%	25%
04	Reading	Spring 2022-2023	125	12%	21%	12%	29%	26%
05	Reading	Spring 2022-2023	130	10%	13%	22%	22%	33%

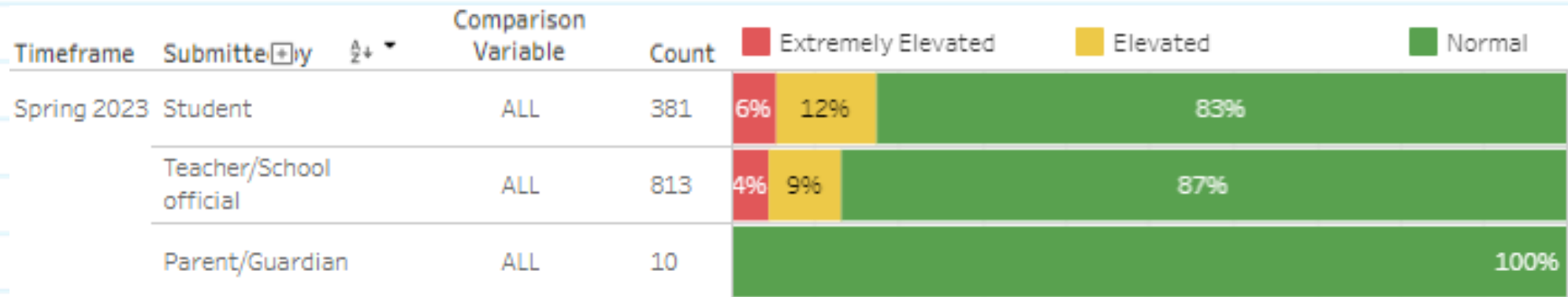
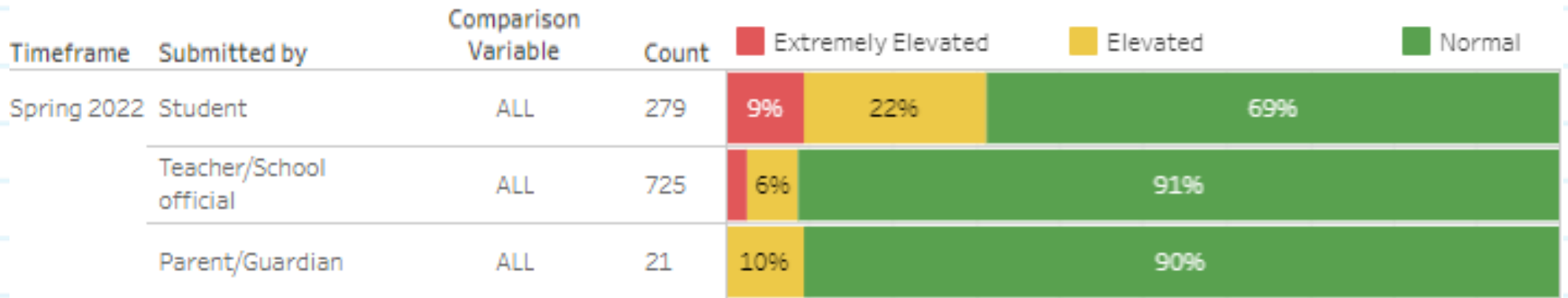
Percentile Quintile



BASC-3 Data



Behavioral and Emotional Risk Index



Needs Assessment

ACTIVITY



Needs Assessment

During this Needs Assessment, we will look at data from the Spring MAPS administration and identify 2-3 potential needs for the 2023-2024 school year.

This discussion will help school leadership as they begin developing the school's 2023-2024 Continuous Improvement Plan this summer.

Needs Assessment: Guiding Questions

- What does this data tell us?
- What good news is there to celebrate?
- Where are growth opportunities?
- What trends do we see in the data?



Needs Assessment:

What are two to three (2-3) needs we can identify based our data?



	Need
1	Student and teacher math support – additional opportunities to practice and tutorial
2	Be more intentional about intervention and data usage. Utilize specialists to support math.
3	More intentional phonics instruction coupled with OG.

Information Items



Principal's Report





- Lion King Kids Performance
- NAHS Stellar Seniors
- End of Year Calendar
- Esports Championship at NAHS - May 13, 2024 (9 AM-4 PM)
- French class

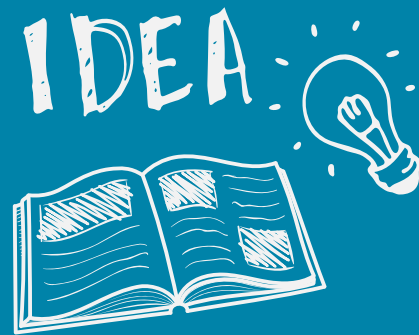
Additional Information Items

- **Cluster Advisory Team Report**
- **GO Team Elections**
 - Find candidates at apsstrongschools.com
 - Vote **APRIL 18-27**
 - Households are sent a unique link based upon information in Infinite Campus
 - School Staff will be sent a link to their APS email address

Announcements

- **GO Team Members**

- Check your email starting **May 1** for end of year survey links
 - GO Team Satisfaction Survey
 - Principal Feedback Survey
- Complete your required trainings **ASAP**
 - Contact the GO Team Office with any questions





Thank
You

for yet another
great year!

